

Disc wood chipper introduction

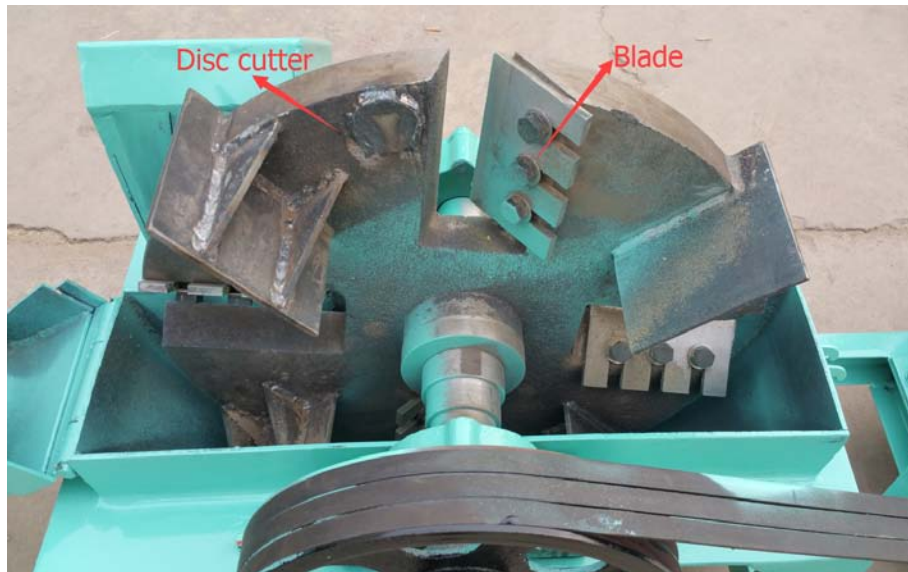
Disc wood chipper machine is a kind of the chipper machines, it is designed specially for chipping wood logs, bamboo, wood timbers., etc. It is widely used in pellet production industry, paper industry particle board industry. It can cut the wood materials into high quality wood chips and shavings with flat incision, even length and uniform chip thickness.

The disc wood chipper have two kind, one kind equipped with electric motor, the other kind equipped with diesel engine. We can can add wheels to make it movable. So when you choose a disc wood chipper, if you can tell us what kind of engine you want to use, the capacity you want and if you need make movable, it is better for us to give you suggestion.

Apart from disc wood chipper we also have [drum wood chipper](#) for your choice.

Disc wood chipper structure

The disc wood chipper machine is made up of main structure, cutting blades, motor and transmission device, feeding and discharge chute. The wood and other raw material feed into the feeding chute then go to the cutting disc, the cutting disc is running by the transmission of motor, the rotating blades will cut the wood and other raw material into small chips, according to the requirement of different usage of chips, the length and thickness of final chips can be adjusted. For the bigger model disc wood chipper, we also equipped with feeding flat conveyor and discharge conveyor to make the operation much more easier. The whole machine is controlled by the electric panel, which include the thermal overload protection system to protect motor in case of overload.



Disc wood chipper inner structure

Disc wood chipper advantages

1. Complete structure, easy to install, operate and maintain, only cover a small area to install it.
2. The chipper body is made of high strength steel, firm, shock-resistant, with less noise.
3. Special design and reliable blades layout, the disc wood chipper works more efficiently to get evenly length and uniform thickness.
4. Easy to adjust the length and thickness of final chips

Disc wood chipper technical data

Model:	BX600	BX680	BX850	BX1000	BX1150	BX1300
Capacity	0.8-1.2	2-3	3-4	4-5	5-6 T/h	6-8
Main motor power	15Kw	22Kw	37Kw	45Kw	55 Kw	75Kw
Disc cutter diameter	600mm	680mm	850mm	1000mm	1150 mm	1300mm
Rotating speed of cutter	960 rpm	960 rpm	960 rpm	960 rpm	960 rpm	960 rpm
Inlet feeding mouth size	120x120mm	150x150mm	200x200mm	230x230mm	270x270 mm	350x350mm
Blades quantity	4	4	4	4	4	6
Feeding speed	38 m/min	38 m/min	38 m/min	38 m/min	38 m/min	38 m/min
Max process wood diameter	100mm	130mm	180mm	200mm	250 mm	300mm
Feeding flat conveyor length	Not include	Not include	6 meters	6 meters	6 meters	6 meters
Feeding flat conveyor power	Not include	Not include	3 Kw	3 Kw	3 Kw	3 Kw
Discharging belt conveyor length	Not include	Not include	6 meters	6 meters	6 meters	6 meters
Discharging belt conveyor power	Not include	Not include	2.2 Kw	2.2 Kw	2.2 Kw	2.2 Kw
Weight	760Kg	1370Kg	1750Kg	2180Kg	2950 Kg	3450Kg

We can make the above disc wood chipper with diesel engine, details please send inquiry, customized available.



Diesel movable wood chipper